



300 HD IR

The 300 HD IR offers an HD IR camera combination, using the high resolution FLIR SC600 series in combination with the Sony FCB series visible camera.

Ideal for radiometric research work, such as Powerline inspection, oil spill detection, pipeline inspection and wild life inventories.



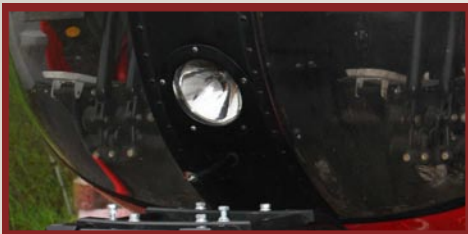
Superior Performance using Long Wave thermal IR

High Precision measurement accuracy, superb image quality and long wave solar reflection immunity provides outstanding performance for most applications.



Gyro Stabilized Camera Gimbal

For stable imaging a fully digital 4-axis active gyro stabilization system compensates for the aircraft movements and vibrations.



Radiometric output

The Explore 300 HD IR offers a radiometric output with full thermal resolution. Providing digital images with accurate temperature information is a key feature for efficient Thermal inspection.



On Screen Graphics

On Screen graphics indicating Time and Date, GPS position, etc

System Options

- Analysis and Reporting Software
- Laser Range finder
- Video Tracker
- SLASS Interface
- GPS
- Monitor

Technical Specification



Gimbal System

Four-Axis Active Gyro-Stabilized Gimbal	
Coverage Az	360° Continuous
Coverage El	+20° to -120°
Dimension	Ø300 mm (11.8 in)
Weight	20 kg (44 lb) (depending on configuration)
Power Req.	20-30 VDC, 10A



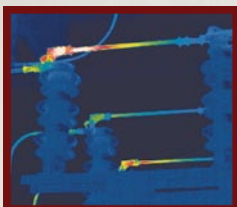
IR Camera

FLIR P660 (SC640)	Focal Plane Array (FPA), Uncooled microbolometer
FOV	12° x 9°
Array Size	640x 480 pixels
Spatial Res. (IFOV)	0.65mRad
Thermal Sensivity	60mK at 30°C
Spectral Range	7.5-13µm
Focus	Automatic or Manual
Electrical Zoom	2x
Temperature Range	-40° to +500°C
Temperature Accuracy	+/- 2°C, +/- 2% of reading



TV Camera

Camera	FCB H11	FCB EX1000P
Type	HD (up to 1080i)	PAL / NTSC
Image Sensor	1/3" CMOS	1/4" HAD CCD
Optical Zoom	10x (50° to 5.4°)	36x (57.8° to 1.7°)
Digital Zoom	Yes	Yes
Low light mode	Yes	Yes



Standard Configuration

Turret Camera Unit, Hand Control Unit, Interface Unit, Cable Kit

Installation

Installation Kit - Available for most helicopters types, please enquire.